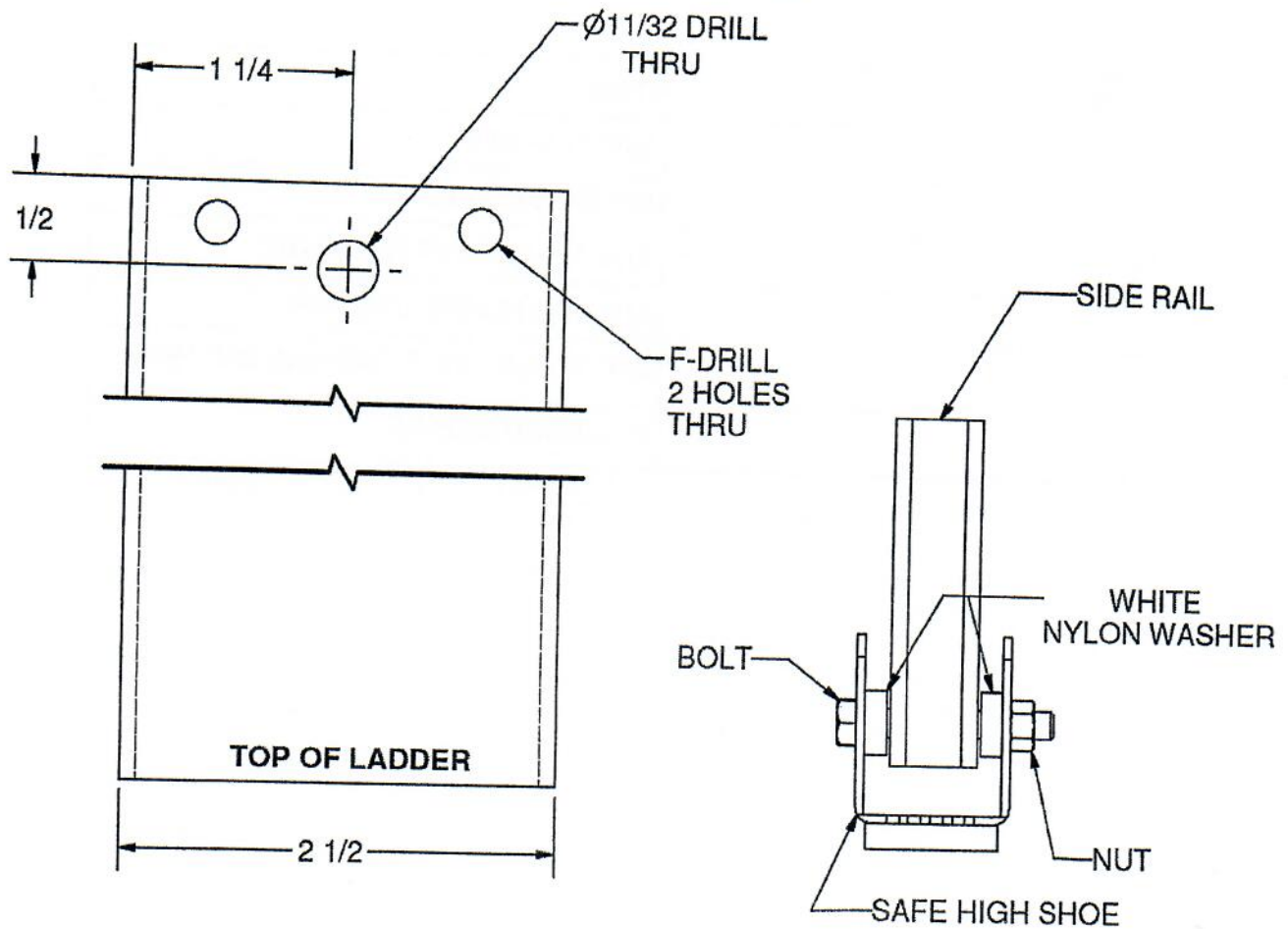


RUBBER PLUG TO SAFETY SHOE INSTRUCTIONS

(SEE PARTS LIST REVERSE SIDE)



Step #1 - Remove Aluminum rivets by drilling them out with an "F" drill or chisel off rolled end of rivet and punch out with punch.

Step #2 - Remove Rubber Plug

Step #3 - Insert wood block flush with bottom of siderail.

Step #4 - Drill bolt hole to diagram above using 11/32" drill bit. Then drill rivet hole using an "F" drill.
Note: Rivet holes **DO NOT** need to be measured, use existing holes.

Step #5 - Rivet Wood Block in ladder siderail.

Step #6 - Secure Safe high shoe to siderail utilizing Bolt, White Nylon spacers, and Locknut.
Note : **DO NOT** overtighten, White Nylon Spacers need to just touch shoe.